



DURAPANEL™

TITAN

SAFETY FENCING
SOLUTION

F4 SAFETY FROM FALLING

The New Zealand Building Code (NZBC) requires barriers to be installed where people could fall from a height of 1 metre or more including retaining walls, decks, stairs, landings and external balconies.

Barriers must be designed to resist the loads (such as imposed and wind loads) they are likely to experience throughout their expected life-span without collapsing or becoming unstable and without deflecting unacceptably, causing a loss of

amenity. The barrier must also be sufficiently durable, without the need for reconstruction or major renovation, to function as required throughout its life.

HELPFUL LINKS

building.govt.nz/f4-safety-from-falling/
building.govt.nz/guidance-on-barrier-design/

INTRODUCING

DURAPANEL™ TITAN SAFETY FENCING

DuraPanel™ TITAN is a fencing system design-engineered specifically for the purpose of fall-restraint applications and NZ's first aluminium safety fence that can be installed at 2.4m centres and while meeting the NZBC F4 specification requirements.

We can provide producer statements and a range of fixing details for most common applications to make it easy to specify TITAN for your next retaining wall, balustrade or cycleway fence project.

WHAT'S GREAT ABOUT DURAPANEL™ TITAN SAFETY FENCING

ALUMINIUM CONSTRUCTION

Corrosion resistant. This fence won't rust.

STRONG

65x65mm Posts
50x25mm Rails



SAFETY FROM FALLING COMPLIANT

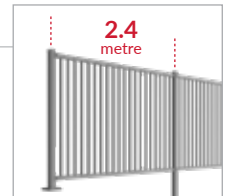
Designed to meet F4 Safety from Falling compliance when installed to manufactures specifications.

HIGH QUALITY

Powder-coated finish
Standard in black

F4 COMPLIANT AT 2.4m

Saving costs with installation time and materials



19 X 19mm SQUARE VERTICALS

For added strength and better appearance

QUICK AND SIMPLE INSTALLATION

Modular system with screw-on brackets



RAKING PANEL

Available as raking panel to match uneven grounds



STOCK ITEM

This is a stocked product line and will normally be available for following day dispatch.



CUSTOM COLOURS AVAILABLE

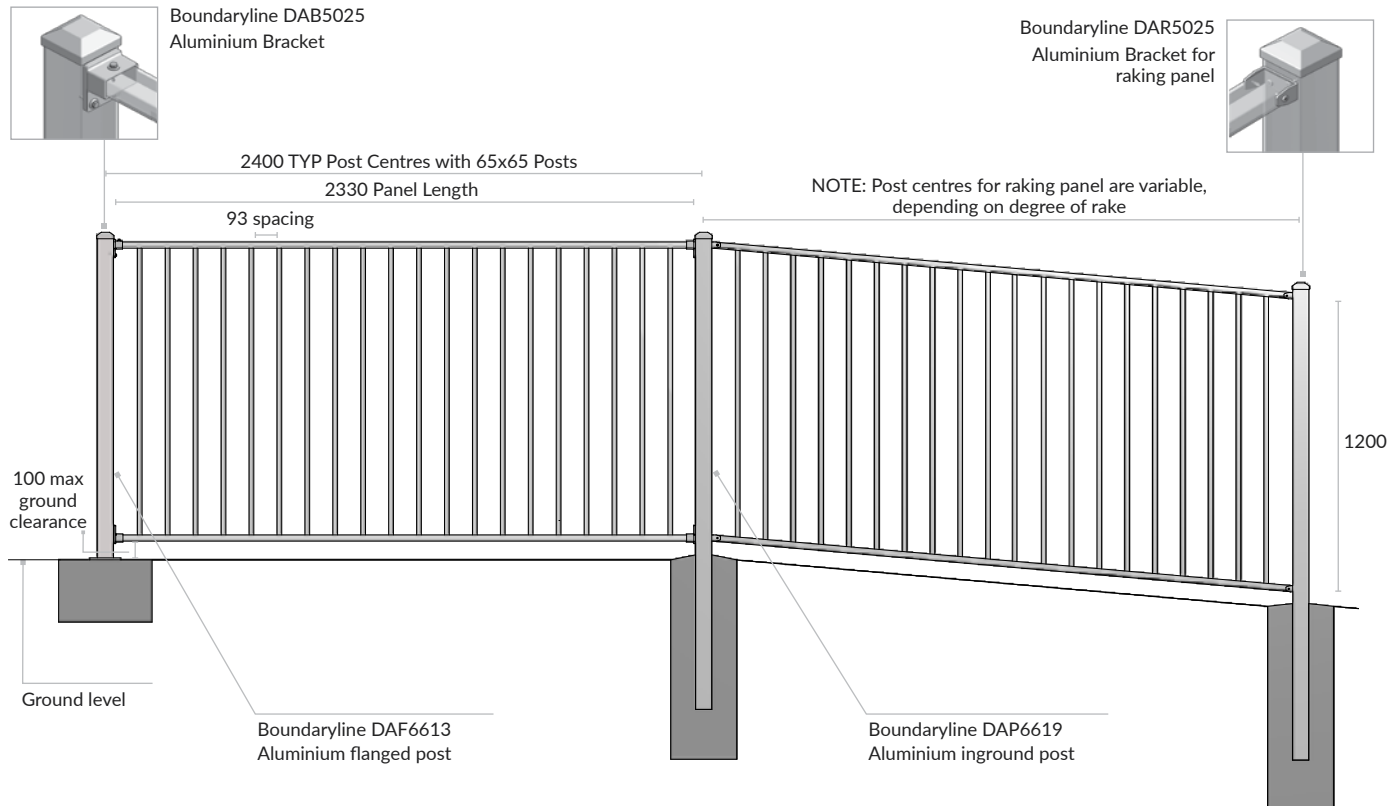
Alternative colour finishes are available for this product at an added cost, talk to us about the options.



WARRANTY

Product is covered for warranty under the conditions of Boundaryline's warranty agreement. Copy available on request.

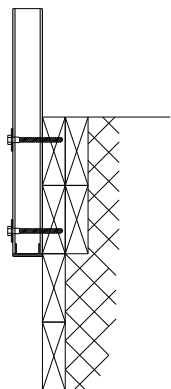
INNOVATIVE INSTALLATION OPTIONS



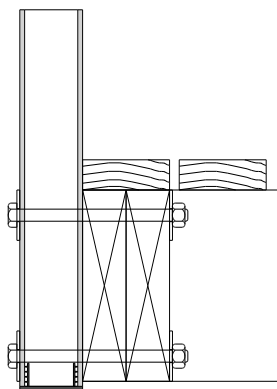
SPECIFICATIONS

- F4 compliant at 2.4 post centre
- Aluminium, powdercoated finish
- Producer Statment (PS1) Approved

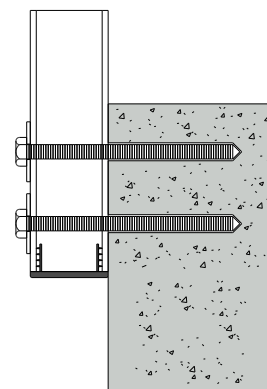
Visit boundaryline.co.nz/resources to download Producer Statements, Technical Support & CAD drawing files.



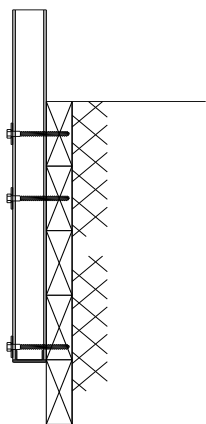
**SIDE FIXED TO DOUBLE BOARD
RETAINING WALL**



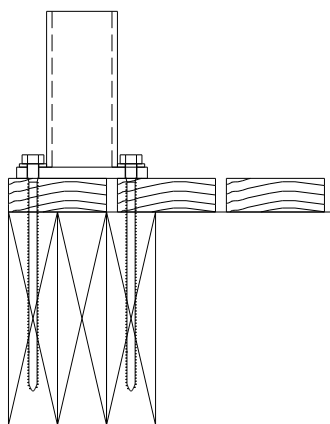
SIDE FIXED TO TIMBER DECK



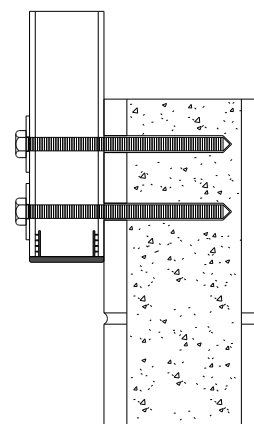
SIDE FIXED TO CONCRETE



**SIDE FIXED TO SINGLE BOARD
RETAINING WALL**



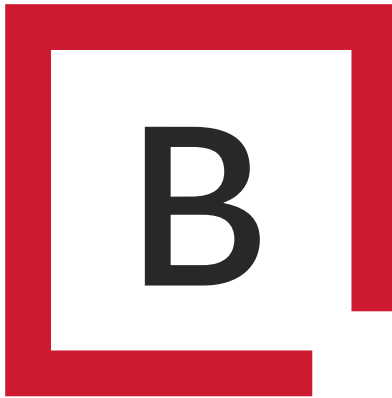
TOP FIXED TO TIMBER DECK



SIDE FIXED TO MASONRY

TECHNICAL SUPPORT

We have a full range of technical drawings available in DWG, DXF, Skeetch-Up and PDF and Producer Statements are available for quick download at boundaryline.co.nz/resources. Our technical support team are available on 0800 003 006 Mon-Fri to assist with any project or product questions you may have.



0800 003 006 / boundaryline.co.nz