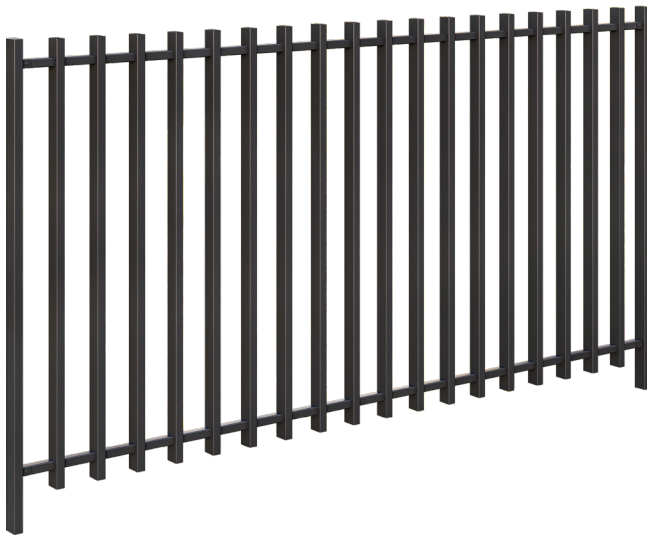




## Product Specification Sheet

# DuraPanel Axis



### Fence Panel

<b>Panel Height</b>	1200mm
<b>Panel Length</b>	2250mm
<b>Verticals Size</b>	50x25mm
<b>Verticals Spacing</b>	95mm
<b>Rail Size</b>	25x25mm
<b>Post Size</b>	50x25 / 50x50mm
<b>Post Centres</b>	2275 / 2300mm

*Custom raking panels available (made to order)*



### Standard Colours



Black

*Custom powder coat colours available*

### Description

**A modern linear statement.** DuraPanel Axis features a unique “floating vertical” design, creating a sleek, contemporary look ideal for pools and garden areas.

Built from strong, welded aluminium, the Axis panels are tough, durable, and finished with a long-lasting black powder coat.

### Material

- Powder coated aluminium

### Features

- Modern linear design
- Creates a seamless floating fence effect with the 50x25mm in-line posts that match the verticals
- Constructed from robust aluminium with a powder coat finish for extra durability
- Custom fence and gate solutions available

### Applications

- Residential
- Pools
- Medium Density Residential
- Commercial
- Parks and Playgrounds
- Schools and Education Centres
- Care Homes
- Balustrades

### Compliance Information

- **F4** (*Safety From Falling*) compliant when installed as per PS1
- **F9** (*Restricting Access to Residential Pools*) compliant when installed as per PS1
- Generic PS1 available for download
- Site Specific PS1 available on request

*Refer to PS1 when installing in any F4 or F9 situations*

# Product Specification Sheet

## DuraPanel Axis

### Care and Maintenance

When installing in-ground posts, slope concrete away from posts to limit water pooling around posts.

Avoid earth and soil coming into contact or building up against fence, and limit contact with fertilisers and garden chemicals.

Wash down regularly with soft brush and mild detergent solution. Avoid using harsh abrasive products.

Angle grinders should not be used to cut fencing.

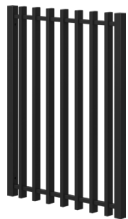
Ensure gate tracks and rack are clear of debris and buildup.

### Warranty

5 year warranty when installed with these details and regularly maintained (not within 0.5km of ocean, or 1.5m from salt water pools).

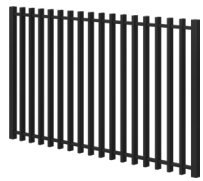
## Axis Gates

Stocked and typical gate widths and heights shown.  
Any gate size can be custom fabricated to fit any required dimensions



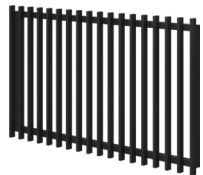
### Pedestrian Swing Gates

Gate Height	1200mm
Gate Width	950mm stocked or manufactured to requirements
Stile Size	25x50mm
Top Rail	25x25mm
Bottom Rail	25x25mm



### Swing Gates

Gate Height	1200mm
Gate Width	Up to 2250mm (manufactured to requirements)
Stile Size	50x50mm
Top Rail	25x25mm
Bottom Rail	25x25mm



### Driveway Swing Gates

Gate Height	1200mm
Gate Width	Manufactured to requirements
Stile Size	50x50mm
Top Rail	40x40mm
Bottom Rail	40x40mm

Verticals face-fixed to welded frame



### Sliding Gates

Gate Height	1200mm
Gate Width	Manufactured to requirements
Stile Size	50x50mm
Top Rail	40x40mm
Bottom Rail	50x100mm

### Bracket Fixing Detail



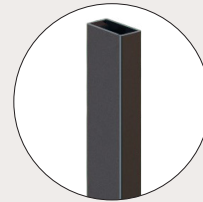
### Brackets



#### Brackets

Type	DuraPanel Axis Bracket
Size	25x25mm
Fixings	10g-10x16mm wafer head screw
Finish	Powder coated aluminium

### Posts



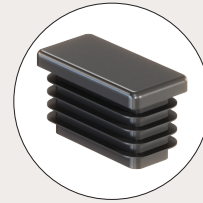
#### In-ground Posts

Size	50x25 / 50x50mm
Length	1800 / 2100mm
Finish	Powder coated aluminium



#### Flanged Posts

Size	50x25 / 50x50mm
Flange	125x125x5mm
Length	1300mm
Finish	Powder coated aluminium



#### Post Cap

Type	Internal fit plastic cap
Size	50x25mm
Finish	Black Plastic



To view all technical documents scan the QR code or visit <https://www.boundaryline.co.nz/technical-support>