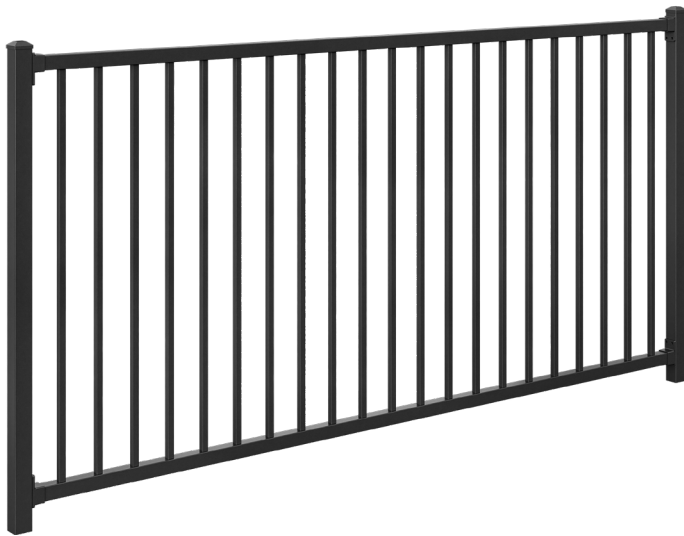




## Product Specification Sheet

# DuraPanel Delta 35



### Fence Panel

<b>Panel Height</b>	1200mm
<b>Panel Length</b>	2400mm
<b>Verticals Size</b>	19x19mm
<b>Verticals Spacing</b>	91.5mm
<b>Rail Size</b>	40x40mm
<b>Post Size</b>	65x65mm
<b>Post Centres</b>	2465mm



### Raking Fence Panel

<b>Panel Height</b>	1200mm
<b>Panel Length</b>	2400mm
<b>Verticals Size</b>	19x19mm
<b>Verticals Spacing</b>	91.5mm
<b>Rail Size</b>	40x40mm
<b>Rake</b>	Max 30°



*Distance between posts and spacings between vertical bars will reduce as degree of rake increases*

### Standard Colours



Black

*Custom powder coat colours available*

### Description

**Extra safety in a classic design.** For applications where extra strength is required.

Delta 35 safety fencing has been design engineered with extra reinforcement to comply with F4 (Safety From Falling), when installed to manufacturers specifications.

### Material

- Powder coated aluminium

### Features

- Timeless minimalist design, with additional strength
- Cost effective F4 solution for residential and non-commercial applications (0.35Kn with 2465mm post centres)
- Constructed from robust aluminium with a powder coat finish for extra durability
- Rakeable panel available up to 35°
- Custom fence and gate solutions available

### Applications

- Residential
- Pools
- Medium Density Residential
- Commercial
- Parks and Playgrounds
- Schools and Education Centres
- Care Homes
- Balustrades

### Compliance Information

- **F4** (*Safety From Falling*) compliant when installed as per PS1
- **F9** (*Restricting Access to Residential Pools*) compliant when installed as per PS1
- Generic PS1 available for download
- Site Specific PS1 available on request

*Refer to PS1 when installing in any F4 or F9 situations*

# Product Specification Sheet

## DuraPanel Delta 35

### Care and Maintenance

When installing in-ground posts, slope concrete away from posts to limit water pooling around posts.

Avoid earth and soil coming into contact or building up against fence, and limit contact with fertilisers and garden chemicals.

Wash down regularly with soft brush and mild detergent solution. Avoid using harsh abrasive products.

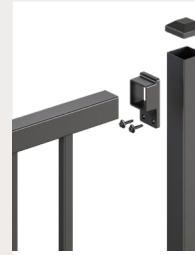
Angle grinders should not be used to cut fencing.

Ensure gate tracks and rack are clear of debris and buildup.

### Warranty

5 year warranty when installed with these details and regularly maintained (not within 0.5km of ocean, or 1.5m from salt water pools).

### Bracket Fixing Detail



Top Fixing



Bottom Fixing



Raking Fixing

### Brackets



#### Brackets

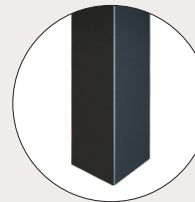
**Type** DuraPanel Bracket  
**Size** 40x40mm  
**Fixings** Tek Screw 12g-14x25mm  
**Finish** Powder coated aluminium



#### Raking Brackets

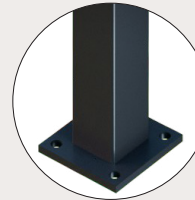
**Type** DuraPanel Raking Bracket  
**Size** 40x40mm  
**Fixings** 10g-10x16mm wafer head screw  
**Finish** Powder coated aluminium

### Posts



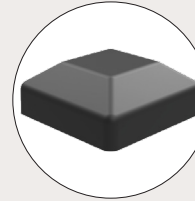
#### In-ground Posts

**Size** 65x65mm  
**Length** 1800/1900/2100/2200/2500mm  
**Finish** Powder coated aluminium



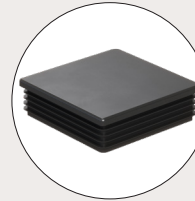
#### Flanged Posts

**Size** 65x65mm  
**Flange** 125x125mm  
**Length** 1300mm  
**Finish** Powder coated aluminium



#### External Post Caps

**Type** DuraPanel aluminium cap  
**Size** 65x65mm  
**Finish** Powder coated aluminium



#### Internal Post Caps

**Type** Plastic flat cap  
**Size** 65x65mm  
**Finish** Plastic



To view all technical documents scan the QR code or visit <https://www.boundaryline.co.nz/technical-support>