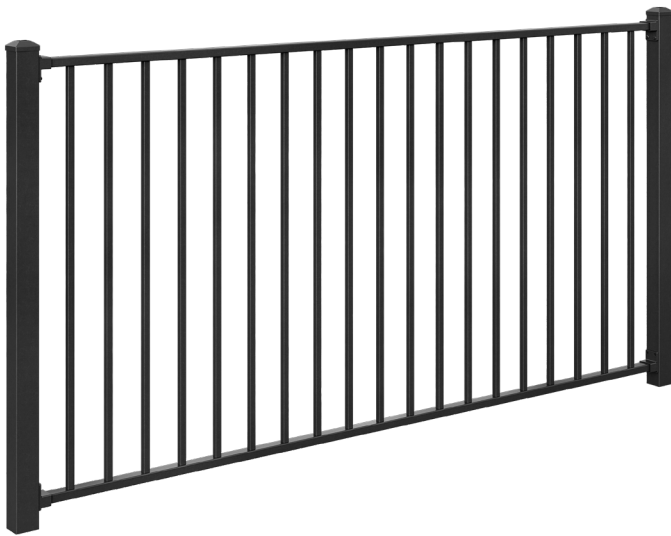




Product Specification Sheet

DuraPanel Titan



Fence Panel

Panel Height	1200mm
Panel Length	2330mm
Verticals Size	19x19mm
Verticals Spacing	93mm
Rail Size	50x25mm
Post Size	65x65mm
Post Centres	2400mm



Raking Fence Panel

Panel Height	1200mm
Panel Length	2330mm
Verticals Size	19x19mm
Verticals Spacing	93mm
Rail Size	50x25mm
Rake	Max 40°



Distance between posts and spacings between vertical bars will reduce as degree of rake increases

Standard Colours



Black

Custom powder coat colours available

Description

Safety with style. Titan Safety Fence has been developed in collaboration with engineers, civil contractors, local authorities, and industry specialists to provide a simple, effective solution for protection on the top of retaining walls. Strong yet sleek, the clean lines of the Titan blend seamlessly into any landscape. Ideal for subdivisions, cycleways, and all applications requiring compliant pedestrian barriers.

Material

- Powder coated aluminium

Features

- Timeless design, with rectangle horizontal rails and square verticals for additional strength
- 2400mm post centres for easy installation on retaining walls
- Cost effective F4 solution for urban design and commercial applications (0.75Kn with 2400mm post centres)
- Constructed from robust aluminium with a powder coat finish for extra durability
- Rakeable panel available up to 40°
- Custom fence and gate solutions available

Applications

- Residential
- Pools
- Medium Density Residential
- Commercial
- Parks and Playgrounds
- Schools and Education Centres
- Care Homes
- Balustrades

Compliance Information

- **F4** (*Safety From Falling*) compliant when installed as per PS1
 - **F9** (*Restricting Access to Residential Pools*) compliant when installed as per PS1
 - Generic PS1 available for download
 - Site Specific PS1 available on request
- Refer to PS1 when installing in any F4 or F9 situations*

Product Specification Sheet

DuraPanel Titan

Care and Maintenance

When installing inground posts, slope concrete away from posts to limit water pooling around posts.

Avoid earth and soil coming into contact or building up against fence, and limit contact with fertilisers and garden chemicals.

Wash down regularly with soft brush and mild detergent solution. Avoid using harsh abrasive products.

Angle grinders should not be used to cut fencing.

Ensure gate tracks and rack are clear of debris and buildup.

Warranty

5 year warranty when installed with these details and regularly maintained (not within 0.5km of ocean, or 1.5m from salt water pools).

Titan Gates

Stocked and typical gate widths and heights shown.
Any gate size can be custom fabricated to fit any required dimensions



Pedestrian Swing Gates

Gate Height	1200mm
Gate Width	950mm stocked or manufactured to requirements
Stile Size	50x50mm
Top Rail	50x25mm
Bottom Rail	50x25mm



Driveway Swing Gates

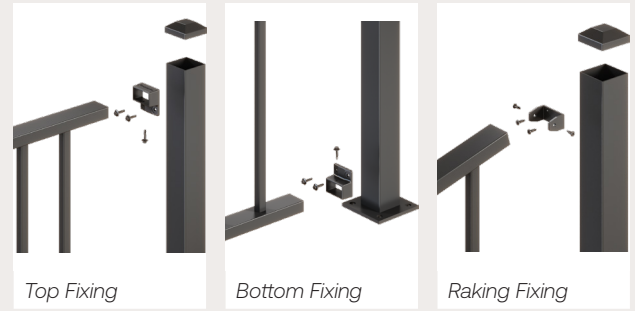
Gate Height	1200mm
Gate Width	Manufactured to requirements
Stile Size	50x50mm
Top Rail	50x25mm
Bottom Rail	50x25mm



Sliding Gates

Gate Height	1200mm
Gate Width	Manufactured to requirements
Stile Size	50x50mm
Top Rail	50x25mm
Bottom Rail	50x100mm

Bracket Fixing Detail



Brackets



Brackets

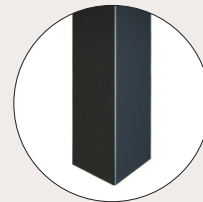
Type	Titan Bracket
Size	50x25mm
Fixings	Tek Screw 12g-14x25mm
Finish	Powder coated aluminium



Raking Brackets

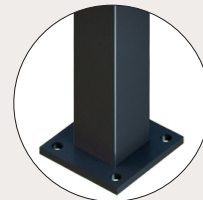
Type	Titan Raking Bracket
Size	50x25mm
Fixings	10g-10x16mm wafer head screw
Finish	Powder coated aluminium

Posts



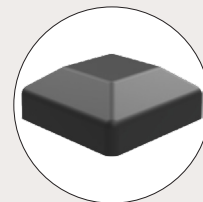
In-ground Posts

Size	65x65mm
Length	1800/1900/2100/2200/2500mm
Finish	Powder coated aluminium



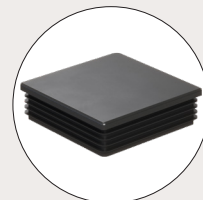
Flanged Posts

Size	65x65mm
Flange	125x125mm
Length	1300/1600/1900mm
Finish	Powder coated aluminium



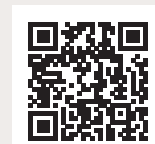
External Post Caps

Type	DuraPanel aluminium cap
Size	65x65mm
Finish	Powder coated aluminium



Internal Post Caps

Type	Plastic flat cap
Size	65x65mm
Finish	Plastic



To view all technical documents scan the QR code or visit <https://www.boundaryline.co.nz/technical-support>