



## Product Specification Sheet

# ColourSlat Timber



### Fence Panel



<b>Panel Height</b>	1200 / 1500 / 1800mm
<b>Panel Length</b>	2380mm
<b>Profile</b>	Timber slats
<b>Post Size</b>	65x50mm C-post
<b>Rail Size</b>	50x50mm
<b>Post Centres</b>	2390mm
<b>Infill Size</b>	70x12mm timber slat
<b>Slat Spacing</b>	11mm between slats

### Standard Colours (posts and rails only)



Black



Woodland Slate  
Grey



Thunder

### Description

**The natural screen.** ColourSlat Timber combines a sturdy steel frame with natural timber slats to create a warm and inviting screen option.

The posts and rails are manufactured from pre-finished steel, with a four step anti-corrosion process, with treated radiata pine slats.

### Material

- Pre-finished steel with treated radiata pine slats

### Features

- Steel posts and rails
- High grade, treated radiata pine timber slats
- Pre-finished steel components
- C-post system integrates seamlessly with ColourPanel and SmartWall fence systems
- Can be stepped to accommodate sloping ground

### Applications

- Residential boundary
- Medium density and inter-tenancy
- Subdivisions
- Commercial
- Privacy screening

### Compliance Information

**Not compliant** for F4 (Safety From Falling) or F9 (Restricting Access to Residential Pools) applications

# Product Specification Sheet

## ColourSlat Timber

### Care and Maintenance

When installing in-ground posts, slope concrete away from posts to limit water pooling around posts.

Avoid earth and soil coming into contact or building up against fence, and limit contact to fertilisers and garden chemicals.

Wash down regularly with soft brush and mild detergent solution. Avoid using harsh abrasive products.

Angle grinders should not be used to cut fencing.

Ensure gate tracks and rack are clear of debris and buildup.

### Warranty

10 years on metal components (not within 1km of ocean or 1.5m from salt water pool)

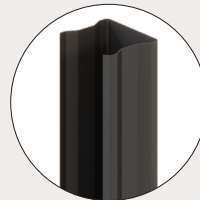
### Fixings



#### Tek Screw

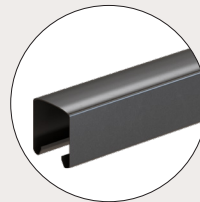
**Type** ColourPanel tek screw  
**Size** 10-16x16mm  
**Finish** Pre-finished steel

### Posts and Rails



#### C-Post

**Size** 65x50mm  
**Length** 2100/2400/2700mm  
**Finish** Pre-finished steel



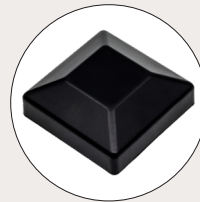
#### Rails

**Size** 50x50mm  
**Length** 2400/3100mm  
**Finish** Pre-finished steel



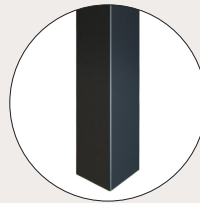
#### C-post Post Caps

**Type** Double post cap  
**Size** 65x60mm  
**Finish** Plastic



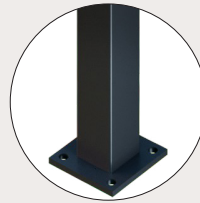
#### Post Caps

**Type** Post cap  
**Size** 65x65/100x100mm  
**Finish** Pre-finished steel



#### In-ground Post

**Size** 65x65/100x100mm  
**Length** 2500/3000mm  
**Finish** Pre-finished steel



#### Flanged Post

**Size** 65x50mm  
**Length** 1900mm  
**Flange** 125x125x10mm  
**Finish** Pre-finished steel



To view all technical documents scan the QR code or visit <https://www.boundaryline.co.nz/technical-support>