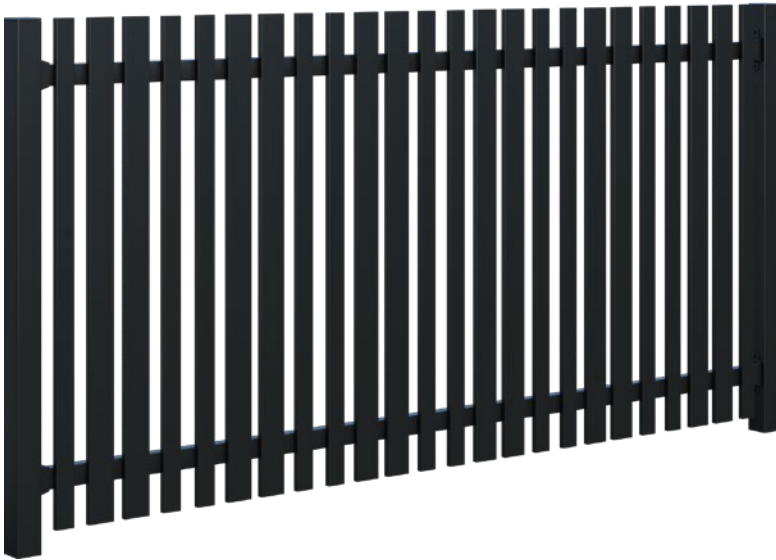




## Product Specification Sheet

# PicketPanel Opus



### Fence Panel

<b>Panel Height</b>	950 / 1200 / 1500 / 1800mm
<b>Panel Length</b>	2430mm
<b>Picket Size</b>	50x16 and 70x16mm
<b>Picket Spacing</b>	30, 40, 50mm
<b>Rail Size</b>	50x32mm
<b>Rake</b>	Max 35°
<b>Post Size</b>	50x50 / 65x65mm
<b>Post Centres</b>	2492 / 2507mm

1800mm high PicketPanel Opus will require 65x65mm posts with 2507mm post centres.

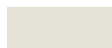
Width and spacings will reduce as degree of rake increases.



### Standard Colours



Black



Frost

### Description

**Visual interest, modern elegance.** PicketPanel Opus is the aluminium alternative to traditional timber picket fencing. Designed with timeless appeal and enhanced visual interest that complements both traditional and contemporary homes, Opus features double alternating 50mm and 70mm pickets with 30mm, 40mm and 50mm spacings between pickets for added depth and character.

### Material

- Powder Coated Aluminium

### Features

- Traditional picket fence design
- 40% permeability
- Double alternating 50mm and 70mm wide pickets
- Constructed from robust aluminium with a powder coat finish for extra durability
- Modular components for quick and simple installation
- Designed with built in raking up to 35°
- Custom fence and gate solutions available

### Applications

- Residential
- Pools
- Medium Density Residential
- Commercial
- Parks and Playgrounds
- Schools and Education Centres
- Care Homes
- Balustrades

### Compliance Information

- **F4** (*Safety From Falling*) compliant when installed as per PS1
  - **F9** (*Restricting Access to Residential Pools*) compliant when installed as per PS1
  - Generic PS1 available for download
  - Site Specific PS1 available on request
- Refer to PS1 when installing in any F4 or F9 situations

# Product Specification Sheet

## PicketPanel Opus

### Care and Maintenance

When installing in-ground posts, slope concrete away from posts to limit water pooling around posts.

Avoid earth and soil coming into contact or building up against fence, and limit contact to fertilisers and garden chemicals.

Wash down regularly with soft brush and mild detergent solution. Avoid using harsh abrasive products.

Angle grinders should not be used to cut fencing.

Ensure gate tracks and rack are clear of debris and buildup.

### Warranty

5 years (not within 0.5km of ocean or 1.5m from salt water pool)

## Opus Gates

Stocked and typical gate widths and heights shown.  
Any gate size can be custom fabricated to fit any required dimensions



### Adjustable Pedestrian Gates

<b>Gate Height</b>	950 / 1200 / 1500 / 1800mm
<b>Gate Width</b>	Up to 1250mm
<b>Stile Size</b>	50x50mm
<b>Top Rail</b>	50x32mm
<b>Bottom Rail</b>	50x32mm



### Driveway Gates

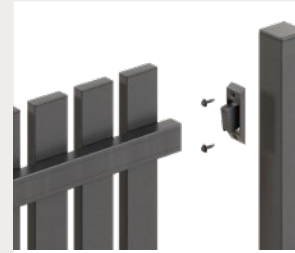
<b>Gate Height</b>	950 / 1200 / 1500 / 1800mm
<b>Gate Width</b>	Manufactured to requirements
<b>Stile Size</b>	50x75mm
<b>Top Rail</b>	50x32mm
<b>Bottom Rail</b>	50x32mm



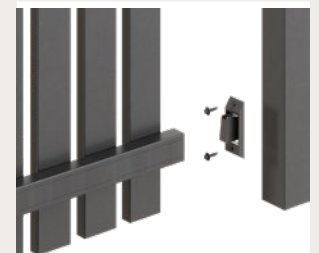
### Sliding Gates

<b>Gate Height</b>	950 / 1200 / 1500 / 1800mm
<b>Gate Width</b>	Manufactured to requirements
<b>Stile Size</b>	50x75mm
<b>Top Rail</b>	50x32mm
<b>Bottom Rail</b>	50x100mm

### Bracket Fixing Detail

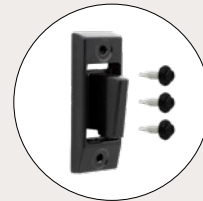


Top Fixing



Bottom Fixing

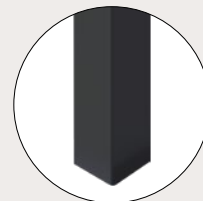
### Brackets



#### Brackets

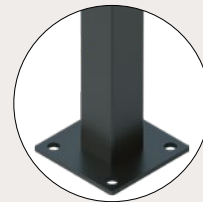
<b>Type</b>	PicketPanel Bracket
<b>Size</b>	50x32mm
<b>Fixings</b>	Tek Screw 12g-14x25mm
<b>Finish</b>	Powder coated aluminium

### Posts



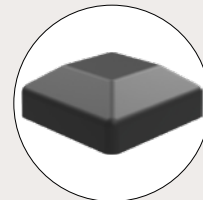
#### In-ground Posts

<b>Size</b>	50x50mm / 65x65mm
<b>Length</b>	1800/1900/2100/2200/2500mm
<b>Finish</b>	Powder coated aluminium



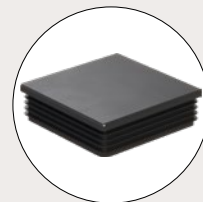
#### Flanged Posts

<b>Size</b>	50x50mm / 65x65mm
<b>Flange</b>	125x125mm
<b>Length</b>	1300/1600/1900mm
<b>Finish</b>	Powder coated aluminium



#### External Fit Post Caps

<b>Type</b>	Aluminium pyramid cap
<b>Size</b>	50x50mm / 65x65mm
<b>Finish</b>	Powder coated aluminium



#### Internal Fit Post Caps

<b>Type</b>	Plastic flat caps
<b>Size</b>	50x50mm / 65x65mm
<b>Finish</b>	Plastic



To view all technical documents scan the QR code or visit <https://www.boundaryline.co.nz/technical-support>