

## Product Specification Sheet

# SleekWall Slat Vertical



### Fence Panel



<b>Panel Height</b>	1800mm
<b>Panel Length</b>	1772mm
<b>Profile</b>	Aluminium Slat
<b>Post Size</b>	65x65mm
<b>Rail Size</b>	30x30mm vertical and horizontal channels
<b>Post Centres</b>	1837mm
<b>Infill Size</b>	100x16mm slats
<b>Slat Spacing</b>	18mm

### Standard Colours



Black



Thunder



Frost

### Description

**The sleekest design in slat fencing.** SleekWall Slat is for the designers and discerning homeowners who want a sleek slat feature fence.

Designed to be quick and simple to install with modular components, SleekWall Slat is the ultimate contemporary aluminium slat fence.

### Material

- Powder Coated Aluminium

### Features

- Modern, minimalist design
- Hidden fixings for a refined finish
- Adjustable slat spacings
- Kitset and modular design
- Fully powder coated system with matching components
- Can be stepped to meet sloping ground
- Matching SleekWall Slat and Solid gates available

### Applications

- Residential boundary
- Medium density and inter-tenancy
- Privacy screening
- Pool fencing
- Subdivisions
- Commercial
- Privacy fencing

### Compliance Information

- **F4** (*Safety From Falling*) compliant when installed as per PS1
- **F9** (*Restricting Access to Residential Pools*) compliant when installed as per PS1
- Generic PS1 available for download
- Site Specific PS1 available on request

*Refer to PS1 when installing in any F4 or F9 situations*

# Product Specification Sheet

## SleekWall Slat Vertical

### Care and Maintenance

When installing in-ground posts, slope concrete away from posts to limit water pooling around posts.

Avoid earth and soil coming into contact or building up against fence, and limit contact to fertilisers and garden chemicals.

Wash down regularly with soft brush and mild detergent solution. Avoid using harsh abrasive products.

Angle grinders should not be used to cut fencing.

Ensure gate tracks and rack are clear of debris and buildup.

### Warranty

10 years (not within 0.5km of ocean or 1.5m from salt water pool)

## Slat Vertical Gates

Stocked and typical gate widths and heights shown.

Any gate size can be custom fabricated to fit any required dimensions



### Pedestrian Gates

<b>Gate Height</b>	1800mm
<b>Gate Width</b>	900 - 1800mm or manufactured to requirements
<b>Stile Size</b>	50x50mm
<b>Rail Size</b>	100x50mm
<b>Post Size</b>	65x65mm



### Driveway Gates

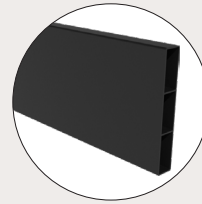
<b>Gate Height</b>	1800mm
<b>Gate Width</b>	Manufactured to requirements
<b>Stile Size</b>	50x50mm
<b>Rail Size</b>	100x50mm
<b>Post Size</b>	100x100mm



### Sliding Gates

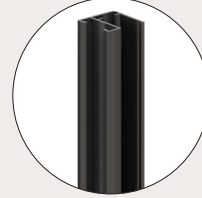
<b>Gate Height</b>	1800mm
<b>Gate Width</b>	Manufactured to requirements
<b>Stile Size</b>	50x50mm
<b>Rail Size</b>	100x50mm
<b>Post Size</b>	65x65mm

### Components



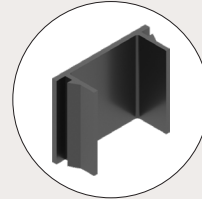
#### Slats

<b>Size</b>	100x16mm
<b>Length</b>	1780/2380mm
<b>Finish</b>	Powder coated aluminium



#### Channels

<b>Size</b>	65x50mm
<b>Flange</b>	125x125x10mm
<b>Length</b>	1900mm
<b>Finish</b>	Pre-finished steel



#### Spacers

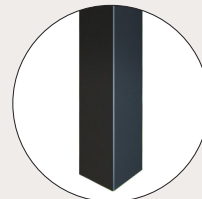
<b>Type</b>	Slat spacers
<b>Size</b>	18mm
<b>Finish</b>	Plastic



#### Fixings

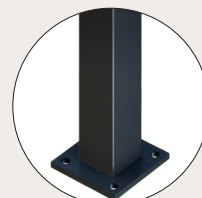
<b>Type</b>	SleekWall tek screw
<b>Size</b>	10-10x16mm

### Posts



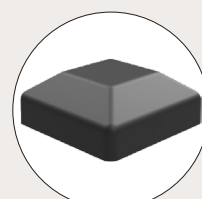
#### In-ground Posts

<b>Size</b>	65x65/100x100mm
<b>Length</b>	2500/3000mm
<b>Finish</b>	Powder coated aluminium



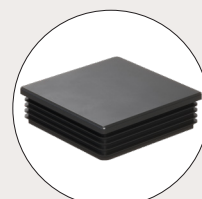
#### Flanged Posts

<b>Size</b>	65x50mm
<b>Flange</b>	125x125x10mm
<b>Length</b>	1900mm
<b>Finish</b>	Powder coated aluminium



#### External Fit Post Caps

<b>Type</b>	SleekWall aluminium cap
<b>Size</b>	65x65/100x100mm
<b>Finish</b>	Powder coated aluminium



#### Internal Fit Post Caps

<b>Type</b>	Plastic flat caps
<b>Size</b>	65x65/100x100mm
<b>Finish</b>	Plastic



To view all technical documents scan the QR code or visit <https://www.boundaryline.co.nz/technical-support>