



## Product Specification Sheet

# SmartWall Horizontal



### Fence Panel



<b>Panel Height</b>	1200 / 1500 / 1800mm
<b>Panel Length</b>	1830mm
<b>Profile</b>	CLT palings
<b>Post Size</b>	65x50mm C-post
<b>Rail Size</b>	50x50mm
<b>Post Centres</b>	1830mm
<b>Infill Size</b>	275x2250mm palings

### Standard Colours (posts and rails only)



Black



Woodland Slate  
Grey



Thunder

### Description

**The elevated timber fence.** SmartWall Horizontal creates a natural boundary that complements the surrounding landscape. SmartWall's acoustic properties reduce the spread of noise making it the ideal choice for boundary fencing.

The Cross Laminated Timber palings are a smart alternative to traditional timber, with the MicroPro copper based wood treatment and pre-finished steel posts and rails, for long lasting strength and stability .

### Material

- Pre-finished steel with Cross-Laminated Timber palings

### Features

- Interlocking tongue and groove palings provide a strong connection across the panel with full privacy
- Supplied in a raw finish ready for staining or painting
- Pre-finished steel surround and components create long lasting strength and stability
- C-post system integrates seamlessly with ColourPanel and ColourSlat fence systems
- Acoustic properties to reduce the spread of noise with an acoustic report available
- MicroPro treatment for the palings uses a copper-based wood treatment technology
- Kiln dried palings, result in minimal movement over time
- Can be stepped to accommodate sloping ground
- Matching SmartWall gates available

### Applications

- Residential boundary
- Medium density and inter-tenancy
- Pool fencing
- Subdivisions
- Commercial
- Privacy fencing
- Schools and education centres

### Compliance Information

- **F4** (*Safety From Falling*) compliant when installed as per PS1
- **F9** (*Restricting Access to Residential Pools*) compliant when installed as per PS1
- Generic PS1 available for download
- Site Specific PS1 available on request

Refer to PS1 when installing in any F4 or F9 situations

# Product Specification Sheet

## SmartWall Horizontal

### Care and Maintenance

When installing in-ground posts, slope concrete away from posts to limit water pooling around posts.

Avoid earth and soil coming into contact or building up against fence, and limit contact to fertilisers and garden chemicals.

Wash down regularly with soft brush and mild detergent solution. Avoid using harsh abrasive products.

Angle grinders should not be used to cut fencing.

Ensure gate tracks and rack are clear of debris and buildup.

### Warranty

10 years on metal components (not within 1km of ocean or 1.5m from salt water pool) 50 years warranty on timber treatment and 40 years warranty on glue lamination

## SmartWall Horizontal Gates

Stocked and typical gate widths and heights shown.  
Any gate size can be custom fabricated to fit any required dimensions



### Pedestrian Gates

<b>Gate Height</b>	1200 / 1500 / 1800mm
<b>Gate Width</b>	Up to 900mm
<b>Rails</b>	50x40mm
<b>Post Size</b>	65x65mm



### Driveway Gates

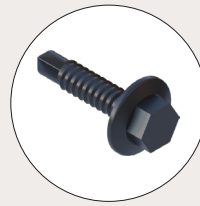
<b>Gate Height</b>	1200 / 1500 / 1800mm
<b>Gate Width</b>	Manufactured to requirements
<b>Rails</b>	50x40mm
<b>Post Size</b>	65x65mm



### Sliding Gates

<b>Gate Height</b>	1200 / 1500 / 1800mm
<b>Gate Width</b>	Manufactured to requirements
<b>Rails</b>	50x40mm
<b>Post Size</b>	65x65mm

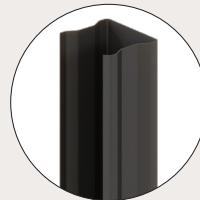
### Fixings



#### Tek Screw

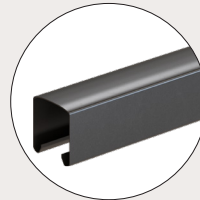
<b>Type</b>	SmartWall tek screw
<b>Size</b>	10-16x16mm
<b>Finish</b>	Pre-finished steel

### Posts and Rails



#### C-Post

<b>Size</b>	65x50mm
<b>Length</b>	2100/2400/2700mm
<b>Finish</b>	Pre-finished steel



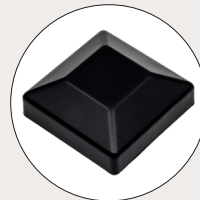
#### Rails

<b>Size</b>	50x50mm
<b>Length</b>	2400/3100mm
<b>Finish</b>	Pre-finished steel



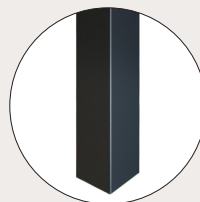
#### C-post Post Caps

<b>Type</b>	Double post cap
<b>Size</b>	65x60mm
<b>Finish</b>	Plastic



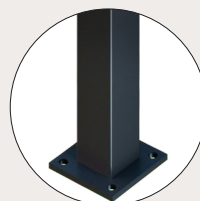
#### Post Caps

<b>Type</b>	Post cap
<b>Size</b>	65x65/100x100mm
<b>Finish</b>	Pre-finished steel



#### In-ground Post

<b>Size</b>	65x65/100x100mm
<b>Length</b>	2500/3000mm
<b>Finish</b>	Pre-finished steel



#### Flanged Post

<b>Size</b>	65x50mm
<b>Length</b>	1900mm
<b>Flange</b>	125x125x10mm
<b>Finish</b>	Pre-finished steel



To view all technical documents scan the QR code or visit <https://www.boundaryline.co.nz/technical-support>