



Product Specification Sheet

SmartWall Vertical Slat Top



Fence Panel

Panel Height	1800/2100mm
Panel Length	2250mm
Profile	CLT palings with 300mm slat section
Post Size	65x50mm C-post
Rail Size	50x50mm
Post Centres	2250mm
Infill Size	275x2250mm palings and 55x7.5mm steel slats
Slat Spacing	24mm between slats



Standard Colours (slats, posts and rails only)



Black



Woodland Slate
Grey



Thunder

Description

The elevated timber fence with permeability. SmartWall Vertical Slat Top creates a natural boundary that complements the surrounding landscape, with the steel slat section allowing natural light penetration.

The Cross Laminated Timber palings are a smart alternative to traditional timber, with the MicroPro copper based wood treatment and pre-finished steel slats, posts, and rails, creating long lasting strength and stability .

Material

- Pre-finished steel frame and slats with Cross-Laminated Timber palings

Features

- Slat top allows for visibility and extra sunlight
- Interlocking tongue and groove palings provide a strong connection across the panel with full privacy
- Supplied in a raw finish ready for staining or painting
- Pre-finished steel surround, slats and components create long lasting strength and stability
- C-post system integrates seamlessly with ColourPanel and ColourSlat fence systems
- Acoustic properties to reduce the spread of noise with an acoustic report available
- MicroPro treatment for the palings uses a copper-based wood treatment technology
- Kiln dried palings, result in minimal movement over time
- Can be stepped to accommodate sloping ground
- Matching SmartWall gates available

Applications

- Residential boundary
- Medium density and inter-tenancy
- Pool fencing
- Subdivisions
- Commercial
- Privacy fencing
- Schools and education centres

Compliance Information

- **F4** (*Safety From Falling*) compliant when installed as per PS1
- **F9** (*Restricting Access to Residential Pools*) compliant when installed as per PS1
- Generic PS1 available for download
- Site Specific PS1 available on request

Refer to PS1 when installing in any F4 or F9 situations

Product Specification Sheet

SmartWall Vertical Slat Top

Care and Maintenance

When installing in-ground posts, slope concrete away from posts to limit water pooling around posts.

Avoid earth and soil coming into contact or building up against fence, and limit contact to fertilisers and garden chemicals.

Wash down regularly with soft brush and mild detergent solution. Avoid using harsh abrasive products.

Angle grinders should not be used to cut fencing.

Ensure gate tracks and rack are clear of debris and buildup.

Warranty

10 years on metal components (not within 1km of ocean or 1.5m from salt water pool) 50 years warranty on timber treatment and 40 years warranty on glue lamination

SmartWall Vertical Slat Top Gates

Stocked and typical gate widths and heights shown.
Any gate size can be custom fabricated to fit any required dimensions



Pedestrian Gates

Gate Height	1500 / 1800 / 2100mm
Gate Width	900-1200mm
Rails	50x40mm
Post Size	65x65mm



Driveway Gates

Gate Height	1500 / 1800 / 2100mm
Gate Width	Manufactured to requirements
Rails	50x40mm
Slat Section	300mm
Post Size	65x65mm



Sliding Gates

Gate Height	1500 / 1800 / 2100mm
Gate Width	Manufactured to requirements
Rails	50x40mm
Slat Section	300mm
Post Size	65x65mm

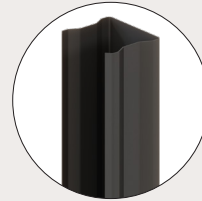
Fixings



Tek Screw

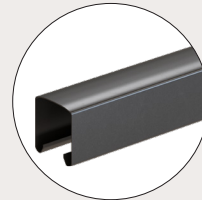
Type	SmartWall tek screw
Size	10-16x16mm
Finish	Pre-finished steel

Posts and Rails



C-Post

Size	65x50mm
Length	2100/2400/2700mm
Finish	Pre-finished steel



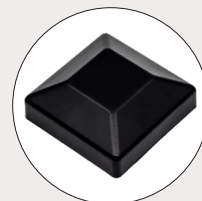
Rails

Size	50x50mm
Length	2400/3100mm
Finish	Pre-finished steel



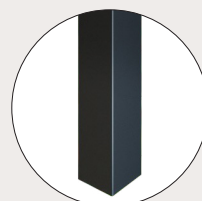
C-post Post Caps

Type	Double post cap
Size	65x60mm
Finish	Plastic



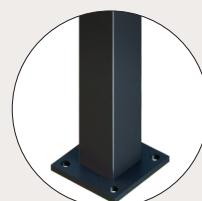
Post Caps

Type	Post cap
Size	65x65/100x100mm
Finish	Pre-finished steel



In-ground Post

Size	65x65/100x100mm
Length	2500/3000mm
Finish	Pre-finished steel



Flanged Post

Size	65x50mm
Length	1900mm
Flange	125x125x10mm
Finish	Pre-finished steel



To view all technical documents scan the QR code or visit <https://www.boundaryline.co.nz/technical-support>